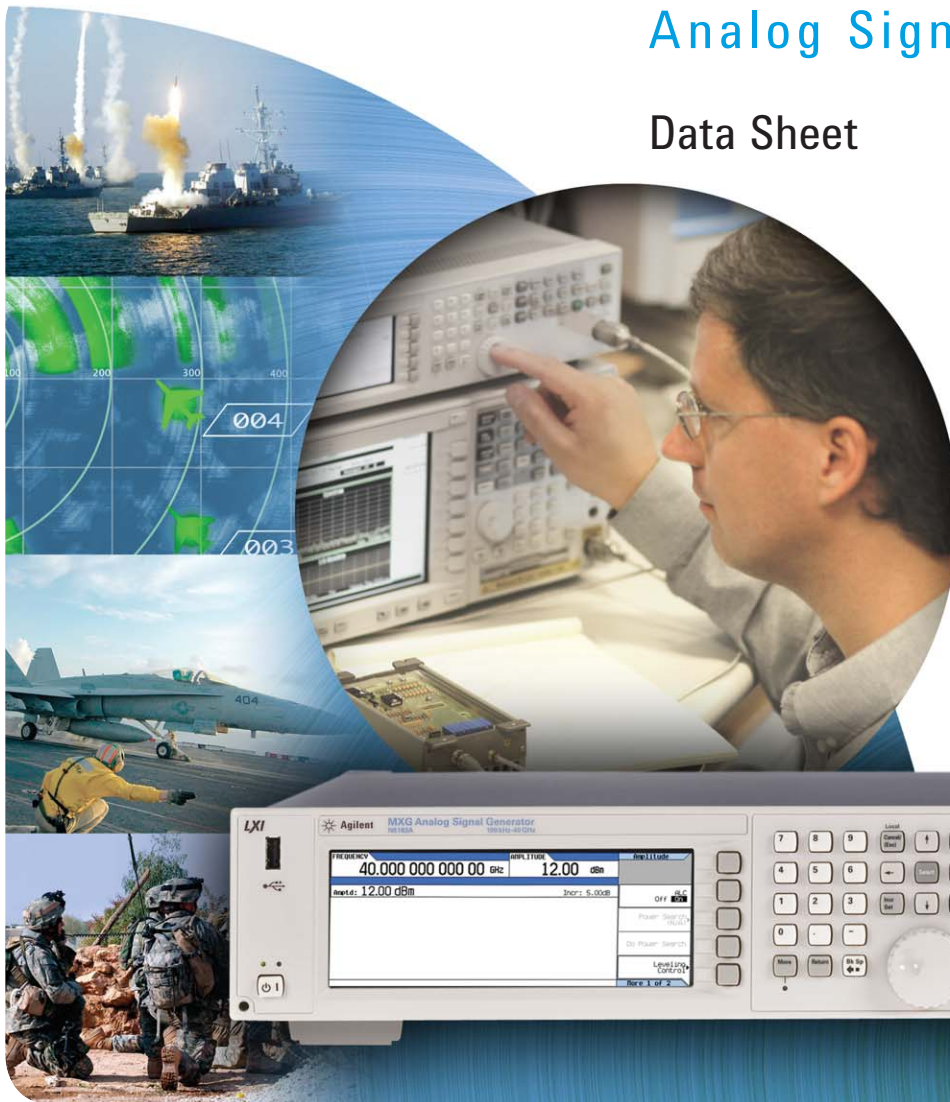


# Agilent N5183A MXG Microwave Analog Signal Generator

## Data Sheet



**Agilent Technologies**

## ***Table of Contents***

<b>Definitions</b> .....	<b>3</b>
<b>Frequency</b> .....	<b>4</b>
<b>Amplitude</b> .....	<b>5</b>
<b>Spectral Purity</b> .....	<b>8</b>
<b>Analog Modulation</b> .....	<b>10</b>
<b>Frequency bands</b> .....	<b>10</b>
<b>Frequency modulation</b> .....	<b>10</b>
<b>Phase modulation</b> .....	<b>11</b>
<b>Amplitude modulation</b> .....	<b>11</b>
<b>Pulse modulation</b> .....	<b>12</b>
<b>Narrow pulse modulation</b> .....	<b>13</b>
<b>Internal analog modulation source</b> .....	<b>14</b>
<b>External modulation inputs</b> .....	<b>14</b>
<b>Simultaneous modulation</b> .....	<b>14</b>
<b>General Characteristics</b> .....	<b>18</b>
<b>Ordering Information</b> .....	<b>18</b>
<b>Archive</b> .....	<b>18</b>
<b>Related Literature</b> .....	<b>18</b>
<b>Application literature</b> .....	<b>18</b>
<b>Product literature</b> .....	<b>18</b>

## Definitions

**Specification (spec):** Represents warranted performance of a calibrated instrument that has been stored for a minimum of 2 hours within the operating temperature range of 0 to 55 °C, unless otherwise stated, and after a 45 minute warm-up period. The specifications include measurement uncertainty. Data represented in this document are specifications unless otherwise noted.

**Typical (typ):** Represents characteristic performance, which 80% of the instruments manufactured will meet. This data is not warranted, does not include measurement uncertainty, and is valid only at room temperature (approximately 25 °C).

**Nominal (nom):** The expected mean or average performance, or an attribute whose performance is by design, such as the 50  $\Omega$  connector. This data is not warranted and is measured at room temperature (approximately 25 °C).

**Measured (meas):** An attribute measured during the design phase for purposes of communicating expected performance, such as amplitude drift vs. time. This data is not warranted and is measured at room temperature (approximately 25 °C).

*Note: All graphs contain measured data from several units at room temperature unless otherwise noted.*

# Frequency

<b>Range</b>	
Option 520	100 kHz to 20 GHz
Option 532	100 kHz to 31.8 GHz
Option 540	100 kHz to 40 GHz
<b>Minimum frequency</b>	100 kHz <sup>1</sup>
<b>Resolution</b>	0.01 Hz
<b>Phase offset</b>	Adjustable in nominal 0.01° increments

## Frequency switching speed<sup>2,3</sup>

Type	Standard	Option UNZ
SCPI mode	≤ 5 ms	≤ 1.15 ms, 750 μs (typ)
List/Step sweep mode	≤ 5 ms	≤ 900 μs, 600 μs (typ)

<b>Stability</b>	± aging rate ± temperature effects ± line voltage effects
------------------	---

<b>Internal time base reference oscillator aging rate</b>	< ±1 ppm/yr
---	-------------

<b>Temperature effects</b>	± 1 ppm (typ) (0 to 55 °C)
----------------------------	----------------------------

<b>Line voltage effects</b>	± 0.1 ppm (nom)
-----------------------------	-----------------

<b>Line voltage range</b>	5% to –10% (nom)
---------------------------	------------------

<b>Reference output</b>	
Frequency	10 MHz
Amplitude	≥ +4 dBm (nom) into 50 Ω load

<b>External reference input</b>	Fixed	Variable (Option 1ER)
Input frequency	10 MHz	1 to 50 MHz
Lock range	± 10 Hz	
Amplitude	> –3.5 to 20 dBm (nom)	
Impedance	50 Ω (nom)	

<b>Digital sweep</b>	
Operating modes	Step sweep (equally or logarithmically spaced frequency steps) List sweep (arbitrary list of frequency steps) Can also simultaneously sweep amplitude. See amplitude section for more detail.
Sweep range	Within instrument frequency range
Dwell time	100 μs to 100 s
Number of points	2 to 65535 (step sweep) 1 to 1601 (list sweep)
Step change	Linear or logarithmic
Triggering	Free run, trigger key, external, timer, bus (GPIO, LAN, USB)

<b>Markers</b>	In step sweep mode, create up to 20 frequency markers
Display	Z-axis or RF amplitude pulse
Functions	M1 to center, M1/M2 to start/stop, marker delta

1. Performance below 250 kHz is unspecified, except as indicated.
2. Time from receipt of SCPI command or trigger signal to within 0.1 ppm of final frequency or within 100 Hz, whichever is greater, and amplitude settled to within 0.2 dB.
3. Specification does not apply when switching to or from frequencies < 500 kHz, when ALC level is < –5 dBm for Option 540 or < 0 dBm for Option 520, or when frequency crosses 0.002, 0.02, 0.1, 2.0, 3.2, 20.0, 25.6, or 32.0 GHz.

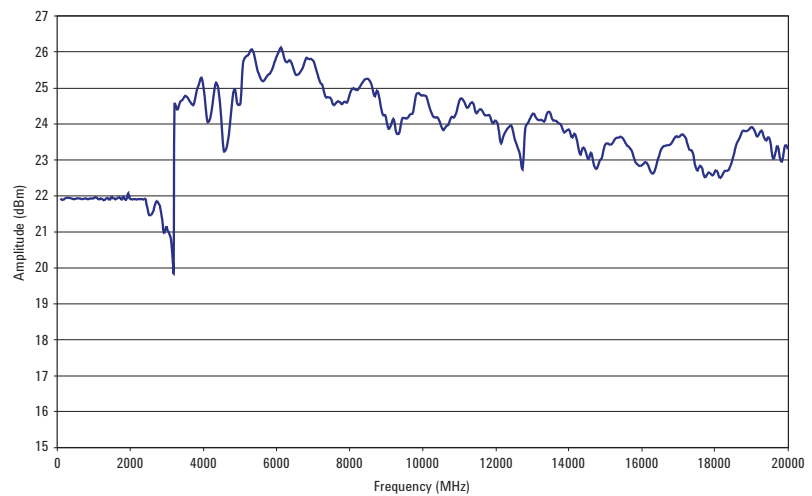
## Maximum output power<sup>1</sup>

Range	Standard <sup>2</sup>	Option 1EA <sup>3</sup>
Option 520		
100 to 250 kHz	+11	+14
> 250 kHz to 3.2 GHz	+11	+15
> 3.2 to 20 GHz	+11	+18
Options 532 and 540		
100 to 250 kHz	+11	+14
250 kHz to 3.2 GHz	+7	+14
> 3.2 to 17 GHz	+7	+15
> 17 to 31.8 GHz	+7	+13
> 31.8 to 40 GHz	+7	+12

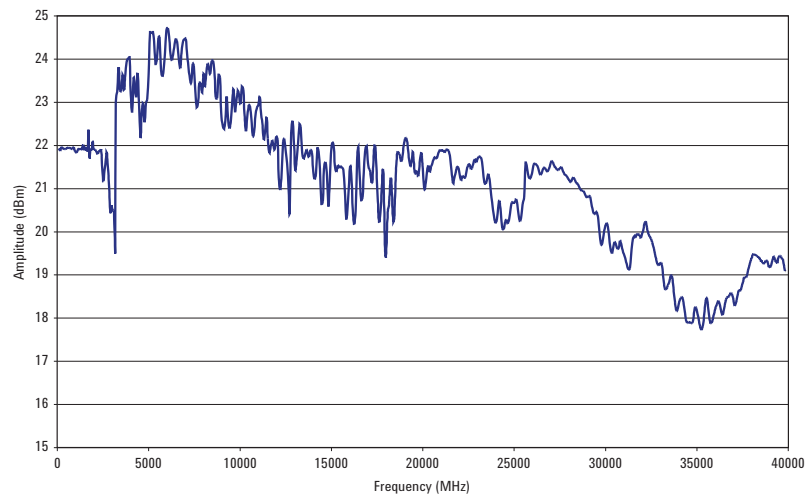
## Minimum output power

Standard -20 dBm  
 Option 1E1 -90 dBm<sup>4</sup>

Maximum available power Option 520 with Option 1EA (measured)



Maximum available power Option 540 with Option 1EA (measured)



1. Quoted specifications between 15 and 35 °C. Maximum output power typically decreases by 0.2 dB/ °C for temperatures outside this range.
2. Settable power +2 dB higher than specified.
3. Settable power +30 dBm.
4. Settable to -130 dBm.

**Resolution** 0.01 dB

**Step attenuator (Option 1E1)** 0 to 115 dB in 5 dB steps

**Amplitude hold range** -15 to maximum specified output power with step attenuator in 0 dB. Can be offset using Option 1E1 mechanical attenuator.

**Amplitude switching speed<sup>1,2</sup>**

Type	
SCPI mode	2 ms (typ)
List/Step sweep mode	2 ms (typ)

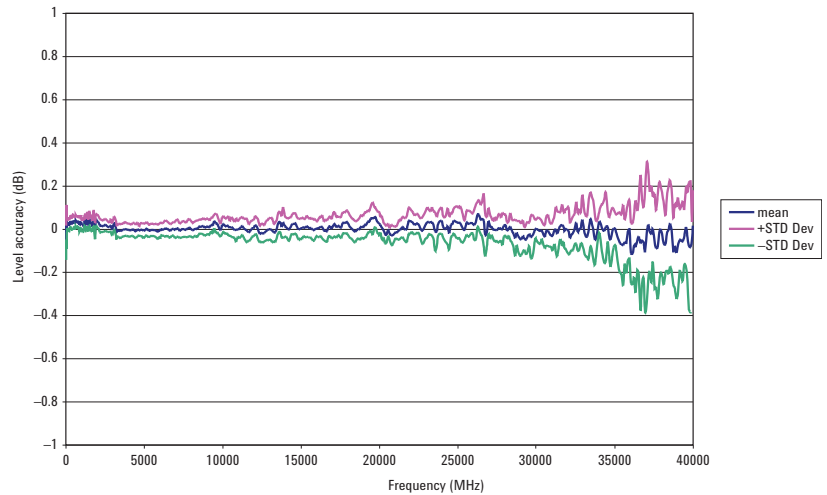
**Absolute level accuracy [dB]<sup>3,4</sup>**

Frequency range	-20 to < -10 dBm	-10 to +10 dBm	> +10 dBm
250 kHz to 2 GHz	±1.4	±0.6	±0.6
2 to 20 GHz	±1.3	±0.9	±0.9
20 to 40 GHz	±1.3	±0.9	±1.0

**Absolute level accuracy with Option 1E1 (dB)<sup>4</sup>**

Frequency range	-90 to < -75 dBm	-75 to < -10 dBm	-10 to +10 dBm	> +10 dBm
250 kHz to 2 GHz	±1.4	±0.7	±0.6	±0.6
2 to 20 GHz	±1.6	±1.0	±0.9	±0.9
20 to 40 GHz	±2.0	±1.1	±0.9	±1.0

Measured level accuracy Options 520 & 540 at -90 dBm



1. Time from receipt of SCPI command or trigger signal to amplitude settled within 0.2 dB.
2. Specification does not apply when switching from and to amplitudes where ALC levels are < -5 dBm for Option 540 or < 0 dBm for Option 520.
3. Level accuracy applies from -20 dBm to maximum output power between 15 °C and 35 °C.
4. For temperatures outside this range, absolute level accuracy degrades by 0.01 dB/degree C for frequencies ≤ 4.5 GHz and 0.02 dB/degree C for frequencies > 4.5 GHz. For instruments with Type-N connectors (Option 1ED), specifications are degraded typically 0.2 dB above 18 GHz. Specifications do not apply above the maximum specified power.

<b>Temperature stability</b>	0.01 dB/°C (typ) for temperatures < 20 °C or > 30 °C
<b>User flatness correction</b>	
Number of points	2 to 1601
Number of tables	10000 maximum; dependent on available free memory in instrument
Entry modes	USB/LAN direct power meter control, LAN to GPIB and USB to GPIB, remote bus and manual USB/GPIB power meter control
<b>SWR</b>	100 kHz to 20 GHz    1.6:1 (typ) > 20 to 40 GHz    1.8:1 (typ)
<b>Leveling modes</b>	Internal, external detector, ALC off, search
<b>External detector leveling<sup>1</sup></b>	
Range	-0.2 mV to -0.5V (nom)
Bandwidth	10 kHz (typ)
<b>Digital sweep modes</b>	
Operating modes	Step sweep (evenly spaced amplitude steps) List sweep (arbitrary list of amplitude steps) Can also simultaneously sweep frequency. See frequency section for more detail.
Sweep range	Within instrument amplitude range
Dwell time	100 μs to 100 s
Number of points	2 to 65535 (step sweep) 1 to 1601 (list sweep)
Step change	Linear
Triggering	Free run, trigger key, external, timer, bus (GPIB, LAN, USB)

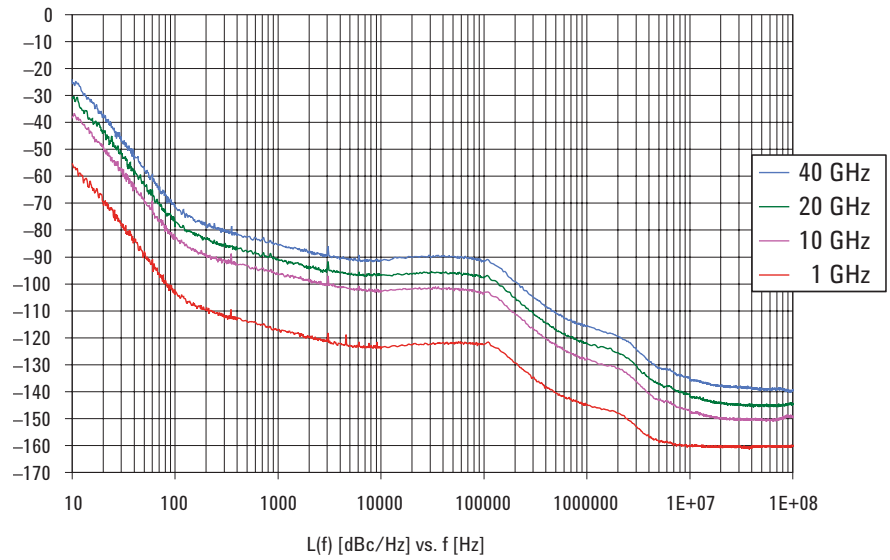
---

1. Not intended for pulsed operation.

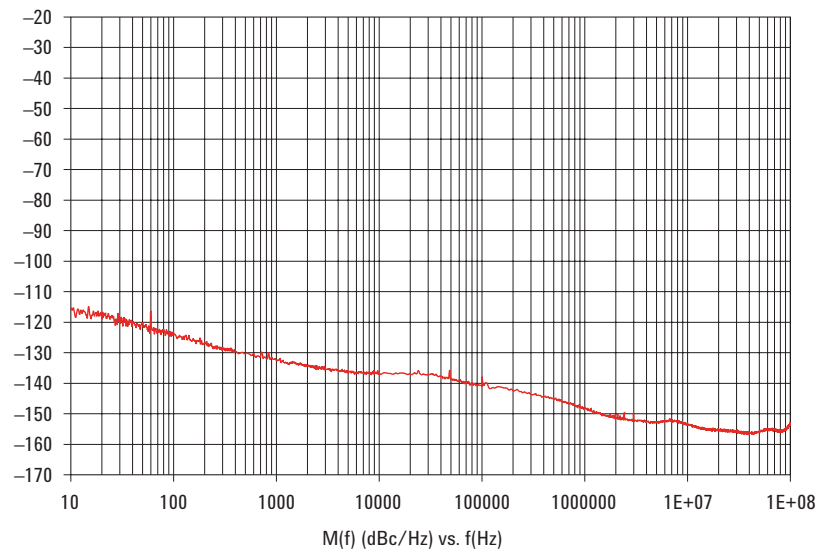
## Single sideband phase noise (at 20 kHz offset from carrier)

Frequency range	dBc/Hz	dBc/Hz (typ)
250 kHz to < 250 MHz	-113	-116
250 to < 375 MHz	-125	-128
375 to < 750 MHz	-119	-122
750 MHz to < 1.5 GHz	-113	-116
1.5 to < 3.0 GHz	-107	-110
3.0 to < 6.0 GHz	-101	-104
6.0 to < 12.0 GHz	-95	-98
12.0 to < 24.0 GHz	-89	-92
24.0 to 40.0 GHz	-83	-86

SSB Phase Noise



AM noise at 10 GHz





**Residual FM** (CW mode, 0.3 to 3 kHz bandwidth, CITT, RMS)  
< N\*5Hz (typ)

**Broadband noise** CW mode at +10 dBm or maximum specified output power, whichever is lower for offsets > 10 MHz

0.25 to 10 GHz	-145 dBc/Hz (typ)
10 to 20 GHz	-135 dBc/Hz (typ)
20 to 40 GHz	-130 dBc/Hz (typ)

**Harmonics (dBc)<sup>1</sup>**

250 kHz to 2 GHz	-28 (-30 typ)
> 2 to 20 GHz	-54 (-60 typ)
> 20 to 40 GHz	-56 (typ)

**Non-harmonics (dBc)<sup>1, 2</sup>**

250 kHz to 250 MHz	-62 (-89 typ)
> 250 to 375 MHz	-68 (-86 typ)
> 375 to 750 MHz	-57 (-74 typ)
> 750 MHz to 1.5 GHz	-54 (-70 typ)
> 1.5 to 3.2 GHz	-54 (-68 typ)
> 3.2 to 6 GHz	-47 (-63 typ)
> 6 to 12 GHz	-41 (-57 typ)
> 12 to 24 GHz	(-50 typ)
> 24 to 40 GHz	(-45 typ)

**Subharmonics (dBc)<sup>1</sup>**

250 kHz to 1.5 GHz	None
> 1.5 GHz to 20 GHz	-53
> 20 to 40 GHz	-50

---

1. CW mode at +10 dBm or maximum specified output power, whichever is lower.  
2. Non-harmonics specifications apply to units with serial numbers ending with 49060000 or greater.  
For units with lower serial numbers, refer to the archive section at the end of this document.

## Analog Modulation

### Frequency bands<sup>1</sup>

Frequency	N
100 kHz to < 250 MHz	1
250 to < 375 MHz	0.250
375 to < 750 MHz	0.500
750 to < 1.5 GHz	1
1.5 to < 3.0 GHz	2
3.0 to < 6.0 GHz	4
6.0 to < 12.0 GHz	8
12.0 to < 24.0 GHz	16
24.0 to 40 GHz	32

### Frequency modulation

#### (Option UNT)

Maximum deviation	N x 10 MHz (nom)
Resolution	0.1% of deviation or 1 Hz, whichever is greater (nom)
Deviation accuracy	< ± 2% + 20 Hz
1 kHz rate, deviation is N x 50 kHz	

#### Modulation frequency response (at 100 kHz deviation)

	1 dB bandwidth	3 dB bandwidth
DC coupled	DC to 3 MHz (nom)	DC to 7 MHz (nom)
AC coupled	5 Hz to 3 MHz (nom)	5 Hz to 7 MHz (nom)

Carrier frequency accuracy relative to CW in DCFM	< ±0.2% of set deviation + (N x 1 Hz) <sup>2</sup> < ±0.06% of set deviation + (N x 1 Hz) (typ) <sup>3</sup>
Distortion	< 0.4%
1 kHz rate, deviation is N x 50 kHz	
Sensitivity when using external input	+1V peak for indicated deviation (nom)

1. N is a factor used to help define frequency and phase modulation specifications within the document.
2. Specification valid for temperature changes of less than ± 5° C since last DCFM calibration.
3. Typical performance immediately after a DCFM calibration.

## Phase modulation

### (Option UNT)

Modulation deviation and frequency response:

	Max deviation	3 dB bandwidth
Nominal bandwidth	N x 5 radians (nom)	DC to 1 MHz (nom)
High bandwidth mode	N x 0.5 radians (nom)	DC to 4 MHz (nom)
Resolution	0.1% of deviation	

Deviation accuracy 1 kHz rate, normal bandwidth mode	< +0.5% + 0.01 rad (typ)
Distortion 1 kHz rate, deviation normal bandwidth mode	< 0.2% (typ)
Sensitivity when using external input	+1V peak for indicated deviation (nom)

## Amplitude modulation<sup>1</sup>

### (Option UNT)

AM Depth	Linear	Exponential
Maximum settable	90%	20 dB
Resolution	0.1% of depth (nom)	0.01 dB (nom)
Accuracy (1 kHz rate)	< ±4% of setting + 1% (typ)	<±(4% of setting + 0.2 dB) (typ)

Modulation rate (3 dB bandwidth, 30% depth)	
DC coupled	0 to 10 kHz (typ)
AC coupled	5 Hz to 10 kHz (typ)
Distortion (1 kHz rate, 30% depth)	< 2.0% (typ)
Sensitivity when using external input	+1V peak for indicated depth (nom)

1. AM is specified at carrier frequencies > 2 MHz, ALC on, and when AM envelope does not exceed max power or go below -15 dBm for Option 520 or -20 dBm for Option 540.

## Pulse modulation<sup>1</sup>

### (Option UNU)

On/Off ratio	> 80 dB (typ) <sup>2</sup>
Rise time	< 50 ns (typ)
Fall time	< 50 ns (typ)
Minimum width	
ALC on	≥ 2 μs (typ)
ALC off	≥ 500 ns (typ)
Resolution	20 ns (nom)
Pulse repetition frequency	
ALC on	DC to 500 kHz
ALC off	DC to 2 MHz
Level accuracy (relative to CW, ALC on or off)	< 1 dB (typ)
Video feedthrough	< 350 mV (typ)
Pulse overshoot	< 15% (nom)
Pulse compression	15 ns (typ)
Pulse delay	
RF delay (video to RF output)	10 ns (nom)
Video delay (ext input to video)	30 ns (nom)
External input	
Input impedance	50 ohm (nom)
Level	+1 V <sub>peak</sub> = ON (nom)
Internal pulse generator	
Modes	Free-run, square, triggered, adjustable doublet, trigger doublet, gated, and external pulse
Square wave rate	0.1 Hz to 10 MHz, 0.1 Hz resolution (nom)
Pulse period	500 ns to 42 seconds (nom)
Pulse width	500 ns to pulse period – 10 ns (nom)
Resolution	10 ns (nom)
Adjustable trigger delay	– pulse period + 10 ns to pulse period to pulse width – 10 ns
Settable delay	Free run – 3.99 to 3.97 μs
Triggered	0 to 40 s
Resolution (delay, width, period)	10 ns (nom)
Pulse doublets	
1st pulse delay (relative to sync out)	0 to 42 s – pulse width – 10 ns
1st pulse width	500 ns to 42 s – delay – 10 ns
2nd pulse delay (relative to pulse 1)	0 to 42 s – (delay <sub>1</sub> + width <sup>2</sup> ) – 10 ns
2nd pulse width	20 ns to 42 s – (delay <sub>1</sub> + delay <sup>2</sup> ) – 10 ns

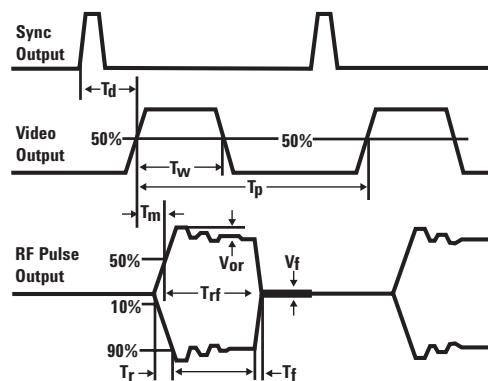
1. Pulse specifications apply to frequencies > 500 MHz. Operable down to 10 MHz.

2. Applies to power levels > –5 dBm for Option 1E1.

## Narrow pulse modulation<sup>1</sup> (Option UNW)

	500 MHz to 3.2 GHz	Above 3.2 GHz
On/Off ratio	> 80 dB (typ)	> 80 dB (typ)
Rise/Fall times (Tr, Tf)	< 10 ns (7 ns)	< 10 ns (7 ns)
Minimum pulse width		
Internally leveled	≥ 2 us	≥ 2 us
ALC off <sup>2</sup>	≥ 20 ns	≥ 20 ns
Repetition frequency		
Internally leveled	10 Hz to 500 kHz	10 Hz to 500 kHz
ALC off <sup>2</sup>	DC to 5 MHz	DC to 10 MHz
Level accuracy relative to CW		
Internally leveled	< ±1.0 dB (typ)	< ±1.0 dB (typ)
ALC off <sup>2</sup>	±1.0 dB (typ)	±1.0 dB (typ)
Width compression	< 5 ns (typ)	< 10 ns (typ)
RF width relative to video out		
Video feed-through <sup>3</sup>	< 300 mV (typ)	< 10 mV (typ)
Video delay - ext input to video	30 ns (nom)	30 ns (nom)
RF delay -video to RF output	10 ns (nom)	20 ns (nom)
Pulse overshoot	< 15% (nom)	< 15% (nom)
Input level	+1 V <sub>peak</sub> = RF On	+1 V <sub>peak</sub> = RF On
Input impedance	50 Ω (nom)	50 Ω (nom)

Td Video delay (variable)  
 Tw Video pulse width  
 (variable)  
 Tp Pulse period (variable)  
 Tm RF delay  
 Trf RF pulse width  
 Tf RF pulse fall time  
 Tr RF pulse rise time  
 Vor Pulse overshoot  
 Vf Video feedthrough



1. Pulse specifications apply to frequencies > 500 MHz. Operable down to 10 MHz.
2. With power search on.
3. Applies to power levels < +10 dBm.

## Internal analog modulation source

### (Option UNT)

Waveform	Sine
Rate range	0.1 Hz to 2 MHz (tunable to 3 MHz)
Resolution	0.1 Hz
Frequency accuracy	Same as RF reference source (nom)

## External modulation inputs

### (Requires Option UNT)

Modulation types	FM, AM, phase mod, pulse mod
Input impedance	50 $\Omega$ (nom)

## Simultaneous modulation<sup>1</sup>

All modulation types (FM, AM,  $\phi$ M and pulse modulation) may be simultaneously enabled except: FM and phase modulation can not be combined; two modulation types can not be simultaneously generated using the same modulation source. For example, AM and FM can run concurrently and will modulate the output RF. This is useful for simulating signal impairments.

---

1. If AM or pulse modulation are on, then phase and FM specifications do not apply.

## General Characteristics

<b>Remote programming</b>	
Interfaces	GPIB IEEE-488.2, 1987 with listen and talk LAN 100BaseT LAN interface, LXI class C compliant USB Version 2.0
Control languages	SCPI Version 1997.0
Compatibility languages supporting a subset of common commands Agilent Technologies	8360 series, E8247C, E8257C, E8257D, E8241A, E8244A, E8251A, E8254A, E4428C, E4438C, E8267C/D, 8662A, 8663A, 83711B, 83712B, 83731B, 83732B, 83751B, 83752B, 8340B, 8341B
<b>Power requirements</b>	100 to 120 VAC, 50 to 60 Hz and 400 Hz 220 to 240 VAC, 50 to 60 Hz 250 W maximum
<b>Operating temperature range</b>	0 to 55 °C
<b>Storage temperature range</b>	-40 to 70 °C
<b>Operating and storage altitude</b>	15,000 feet
<b>Environmental stress</b>	Samples of this product have been type tested in accordance with the Agilent Environmental Test Manual and verified to be robust against the environmental stresses of Storage, Transportation and End-use; those stresses include but are not limited to temperature, humidity, shock, vibration, altitude and power line conditions. Test Methods are aligned with IEC 60068-2 and levels are similar to MIL-PRF-28800F Class 3.
<b>Safety</b>	Complies with European Low Voltage Directive 73/23/EEC, amended by 93/68/EEC • IEC/EN 61010-1 • Canada: CSA C22.2 No. 61010-1 • USA: UL 61010-1
<b>EMC</b>	Complies with European EMC Directive 89/336/ EEC, amended by 93/68/EEC • IEC/EN 61326 • CISPR Pub 11 Group 1, class A • AS/NZS CISPR 11:2002 • ICES/NMB-001
<b>Memory</b>	Memory is shared by instrument states, sweep list files, and other files. There is 512 MB of flash memory available in the N5181A MXG. Depending on how the memory is utilized, a maximum of 1000 instrument states can be saved.

<b>Security (Option 006)</b>	Memory sanitizing, memory sanitizing on power on, and display blanking.
<b>Self test</b>	Internal diagnostic routines test most modules in a preset condition. For each module, if its node voltages are within acceptable limits, the module “passes” the test.
<b>Weight</b>	≤ 13.8 kg (30 lb.) net, ≤ 28.4 kg (62 lb.) shipping
<b>Dimensions</b>	103 mm H x 426 mm W x 432 mm L (4.07 in H x 16.8 in W x 17 in L)
<b>Recommended calibration cycle</b>	24 months
<b>ISO compliant</b>	The Agilent N5181A MXG is manufactured in an ISO-9001 registered facility in concurrence with Agilent Technologies’ commitment to quality.
<b>Front panel connectors<sup>1</sup></b>	
RF output Option 520	Output impedance 50 Ω (nom) Precision APC-3.5 male, or Type-N with Option 1ED
Option 532/540	Precision 2.4 mm male; plus 2.4 – 2.4 mm and 2.4 – 2.9 mm female adapters
Maximum reverse power USB 2.0	0.5 W, 0 Vdc Used with a memory stick for transferring instrument states, licenses and other files into or out of the instrument. Also used with U2000 series USB average power sensors. For a current list of supported memory sticks, visit <a href="http://www.agilent.com/find/MXG">www.agilent.com/find/MXG</a> , click on Technical Support, and refer to FAQs: WaveformDownloads and Storage.
<b>Rear panel connectors<sup>1</sup></b>	
RF output (Option 1EM)	Outputs the RF signal via a precision N type female connector.
Sweep out	Generates output voltage, 0 to +10 V when the signal generator is sweeping. This output can also be programmed to indicate when the source is settled or output pulse video and is TTL and CMOS compatible in this mode. Output impedance < 1 Ω, can drive 2k Ω. Damage levels are ±15 V.
AM	External AM input. Nominal input impedance is 50 Ω. Damage levels are ±5 V.
FM	External FM input. Nominal input impedance is 50 Ω. Damage levels are ±5 V.
Pulse	External pulse modulation input. This input is TTL and CMOS compatible. Low logic levels are 0 V and high logic levels are +1 V. Nominal input impedance is 50 Ω. Input damage levels are ≤ –0.3 V and ≥ +5.3 V.

---

1. All connectors are BNC unless otherwise noted.



Trigger in	This high impedance input accepts TTL and CMOS level signals for triggering point-to-point in sweep mode. Damage levels are $\leq -0.3$ V and $\geq +5.3$ V.
Trigger out	Outputs a TTL and CMOS compatible level signal for use with sweep mode. The signal is high at start of dwell, or when waiting for point trigger in manual sweep mode; low when dwell is over or point trigger is received. This output can also be programmed to indicate when the source is settled, pulse synchronization, or pulse video. Nominal output impedance is 50 ohms. Input damage levels are $\leq -0.3$ V and $\geq +5.3$ V.
Reference input	Accepts a 10 MHz reference signal used to frequency lock the internal timebase. Option 1ER adds the capability to lock to a frequency from 1 MHz to 50 MHz. Nominal input level $-3.5$ to $+20$ dBm, impedance 50 $\Omega$ .
10 MHz out	Outputs the 10 MHz reference signal used by internal time base. Level is nominally $+3.9$ dBm. Nominal output impedance 50 $\Omega$ . Input damage level is $+16$ dBm.
USB 2.0	The USB connector provides remote programming functions via SCPI.
LAN (100 BaseT)	The LAN connector provides the same SCPI remote programming functionality as the GPIB connector. The LAN connector is also used to access the internal web server and FTP server. The LAN supports DHCP, sockets SCPI, VXI-11 SCPI, connection monitoring, dynamic host name services, TCP keep alive. This interface is LXI class C compliant.
GPIB	The GPIB connector provides remote programming functionality via SCPI.
ALC input	This female BNC connector is used for negative external detector leveling. Input impedance      100 k $\Omega$ (nominal) Signal levels $-0.2$ mV to $-0.5$ V Damage levels $\leq -12$ V and $\geq 1$ V
Z-axis output	This female BNC connector supplies a $+5$ V (nominal) level during retrace and band switch intervals of a step or list sweep. During step or list sweep, this connector supplies a $-5$ V (nominal) level when the RF frequency is at a marker frequency and intensity marker mode is on. The load impedance should be $\geq 5$ k $\Omega$ .

## Ordering Information

### N5183A MXG microwave analog signal generator

#### Frequency

520	Frequency range from 100 kHz to 20 GHz
532	Frequency range from 100 kHz to 31.8 GHz
540	Frequency range from 100 kHz to 40 GHz

#### Performance enhancements

UNZ	Fast frequency switching
1E1	Step attenuator
1EA	High power
UNU	Pulse modulation
UNW	Narrow pulse modulation
UNT	AM, FM, phase modulation
006	Instrument security
1ER	Flexible reference input (1-50 MHz)
1EM	Move RF output to rear panel
1ED	Type N RF output connector

#### Accessories

1CM	Rackmount kit
1CN	Front handle kit
1CP	Rackmount and front handle kit
1CR	Rack slide kit
AXT	Transit case

## Archive

### Non-harmonics (dBc)

(For serial numbers < 49060000)

250 kHz to 250 MHz	-54 (-89 typ)
> 250 to 375 MHz	-61 (-86 typ)
> 375 to 750 MHz	-55 (-74 typ)
> 750 MHz to 1.5 GHz	-48 (-70 typ)
> 1.5 to 3.2 GHz	-47 (-68 typ)
> 3.2 to 6 GHz	-40 (-63 typ)
> 6 to 12 GHz	-33 (-57 typ)
> 12 to 24 GHz	-50 (typ)
> 24 to 40 GHz	-45 (typ)

## Related Literature

### Application literature

*RF Source Basics, a self-paced tutorial* (CD-ROM), literature number 5980-2060E

### Product literature

*Agilent MXG Signal Generator, Configuration Guide*, literature number 5989-5485EN

See the Agilent MXG web page for the latest information. Get the latest news, product and support information, application literature, firmware upgrades and more at

[www.agilent.com/find/MXG](http://www.agilent.com/find/MXG)



### Agilent Email Updates

[www.agilent.com/find/emailupdates](http://www.agilent.com/find/emailupdates)

Get the latest information on the products and applications you select.



[www.lxistandard.org](http://www.lxistandard.org)

LXI is the LAN-based successor to GPIB, providing faster, more efficient connectivity. Agilent is a founding member of the LXI consortium.

### Agilent Channel Partners

[www.agilent.com/find/channelpartners](http://www.agilent.com/find/channelpartners)

Get the best of both worlds: Agilent's measurement expertise and product breadth, combined with channel partner convenience.

## Remove all doubt

Our repair and calibration services will get your equipment back to you, performing like new, when promised. You will get full value out of your Agilent equipment through-out its lifetime. Your equipment will be serviced by Agilent-trained technicians using the latest factory calibration procedures, automated repair diagnostics and genuine parts. You will always have the utmost confidence in your measurements. For information regarding self maintenance of this product, please contact your Agilent office.

Agilent offers a wide range of additional expert test and measurement services for your equipment, including initial start-up assistance, onsite education and training, as well as design, system integration, and project management.

For more information on repair and calibration services, go to:

[www.agilent.com/find/removealldoubt](http://www.agilent.com/find/removealldoubt)

For more information on Agilent Technologies' products, applications or services, please contact your local Agilent office. The complete list is available at:

[www.agilent.com/find/contactus](http://www.agilent.com/find/contactus)

### Americas

Canada	(877) 894 4414
Latin America	305 269 7500
United States	(800) 829 4444

### Asia Pacific

Australia	1 800 629 485
China	800 810 0189
Hong Kong	800 938 693
India	1 800 112 929
Japan	0120 (421) 345
Korea	080 769 0800
Malaysia	1 800 888 848
Singapore	1 800 375 8100
Taiwan	0800 047 866
Thailand	1 800 226 008

### Europe & Middle East

Austria	43 (0) 1 360 277 1571
Belgium	32 (0) 2 404 93 40
Denmark	45 70 13 15 15
Finland	358 (0) 10 855 2100
France	0825 010 700*
	*0.125 €/minute
Germany	49 (0) 7031 464 6333
Ireland	1890 924 204
Israel	972-3-9288-504/544
Italy	39 02 92 60 8484
Netherlands	31 (0) 20 547 2111
Spain	34 (91) 631 3300
Sweden	0200-88 22 55
Switzerland	0800 80 53 53
United Kingdom	44 (0) 118 9276201

Other European Countries:

[www.agilent.com/find/contactus](http://www.agilent.com/find/contactus)

Revised: October 1, 2009

Product specifications and descriptions in this document subject to change without notice.

© Agilent Technologies, Inc. 2008, 2010  
Printed in USA, February 23, 2010  
5989-7572EN

